

Light and Voice Educational Displays

1,000 pc. min.

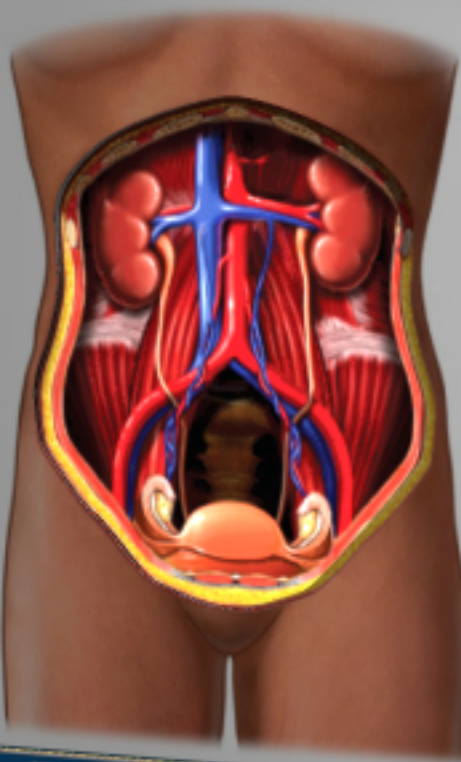
- 4/C process printing
- 30, 60, 90 min. recording
- Maximum size: 20" x 26"

A- Display w/ tear-off pad

B- Display w/ easle

C- Display w/ brochure

Know Your Blood Work: eGFR



What is eGFR?

Your kidneys filter your blood. They remove wastes and water and make urine. Your doctor can check how healthy your kidneys are. He or she will do a blood test that measures how much blood they are filtering. This test is called eGFR (estimated glomerular filtration rate). It is important to know your eGFR because you may not be able to feel if your kidneys have been damaged. Checking your eGFR is the best way to tell how your kidneys are working.

How can I get my eGFR?

Your doctor will test your blood for creatinine. Creatinine is a waste that comes from your muscles. Your doctor will use your creatinine result, your age, your sex and your race (see back) to figure out your eGFR. Creatinine may vary from day to day. For the best results, you might need your eGFR tested again in a few months.

Is there anyone this test won't work for?

Yes! This test is very good, but it's not for everyone. This test is NOT for you if you're:

- Younger than 18
- Very Overweight
- Older than 70
- Very Muscular
- Pregnant
- Have another serious illness

If any

Happysta
(laughter/smiles/giggles)

